

# North Texas Prostate Cancer Coalition

Annual Meeting, November 8, 2012



Together For Good Health

# NTxPCC, Annual Meeting Agenda

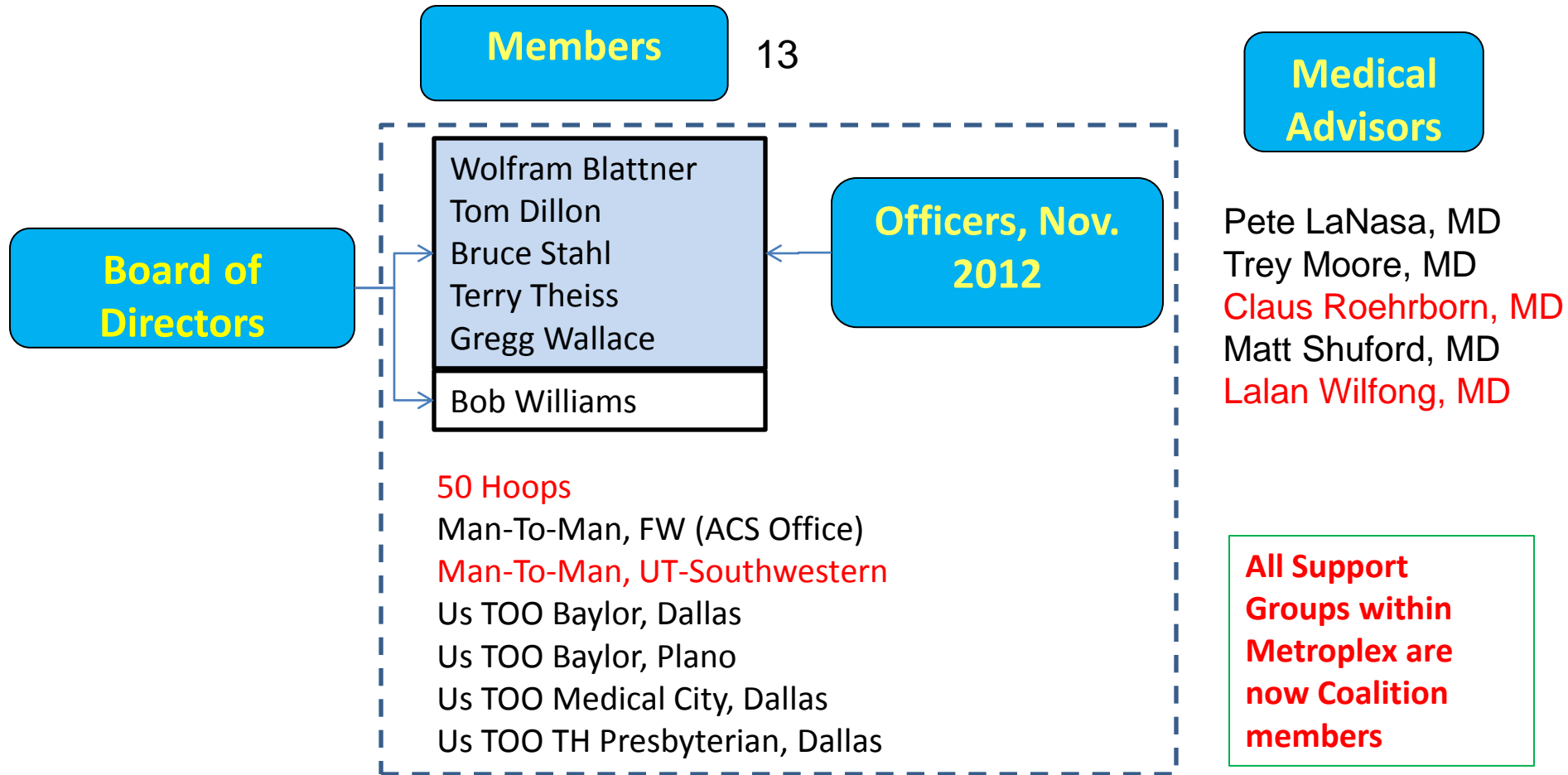
- ***Opening Remarks***
  - *The Coalition*
- ***Administrative***
  - *Minutes*
  - *Election, Directors*
  - *Financial Reports, 2011, 2012 (Current)*
  - *2013 Budget*
- ***Program Review***
  - *Awareness Programs*
  - *Survivor Programs*
  - *Goals for 2013*
- ***Break***
- ***Report on CPRIT/NASPCC Meetings***
- ***Open Discussion***

# NTxPCC - Current Coalition



Note: Tyler is now Affiliate Member

# NTxPCC Organization



**Affiliate member:** Tyler Prostate Cancer Awareness Program

# Election, Directors

## ***Current Directors (3 year terms):***

*Bruce Stahl*

*Gregg Wallace*

*Bob Williams*

## ***Nominations***

*Wolfram Blattner ✓*

*Tom Dillon ✓*

*Terry Theiss ✓*

## ***Additional Nominations?***

*Jim McDaniel (Us TOO Baylor/Plano) ✓*

# 2011 Financial Statement

## Income

Grants and Donations		
Grants (Symposium 2012)	\$ 4,000.00	
Donations	\$ 3,521.00	
<b>Total Income</b>		<b><u>\$ 7,521.00</u></b>

## Expenses

Health Fair and Screening Events		
Models	\$ 167.34	
Banners	\$ 88.18	
Brochure	\$ 1,165.40	
Subtotal		\$ 1,420.92
Contingency Fund		
Noah's (Symposium 2012)	\$ 596.75	
Subtotal		\$ 596.75
Awareness Program		
T Shirts	\$ 161.50	
Subtotal		\$ 161.50
Office Expenses		
Awards	\$ 85.50	
Pay Pal	\$ 4.75	
Travel	\$ 137.64	
Bank Fees	\$ 6.00	
Web Site	\$ 62.03	
Subtotal		\$ 295.92
<b>Total Expenses</b>		<b><u>\$ 2,475.09</u></b>

**Cash on hand Jan 1, 2011** **\$ 8,046.34**

Account Balances Dec 31, 2011	
BBVA Compass	\$13,092.20
PayPal	\$ 0.05
<b>Total cash on hand Dec 31, 2011</b>	<b><u>\$13,092.25</u></b>

Rev 3-31-12

Bruce Stahl

Treasurer, NTPCC

# Financial Statement

## Jan. 1, 2012 thru Oct. 31, 2012



Income	Actual	Budget 2012
Grants and Donations		
Symposium 2012	\$ 5,000.00	
Symposium 2013	\$ 1,000.00	
Donations	\$ 2,600.00	\$ 3,000.00
<b>Total</b>	<b><u>\$ 8,600.00</u></b>	<b><u>\$ 3,000.00</u></b>

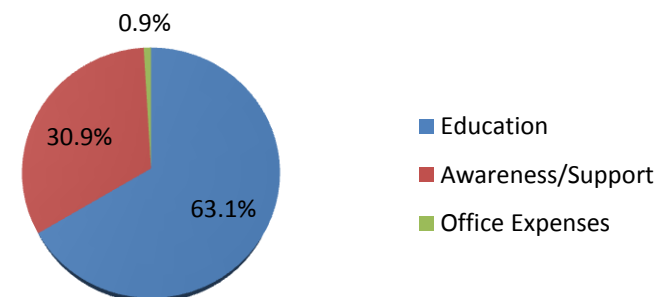
### Expenses

Health Fair and Screening Events		
Support Material	\$ 409.90	\$ 500.00
Handouts	\$ 562.15	\$ 1,000.00
Brochures	\$ 885.40	\$ 1,600.00
Subtotal	<u>\$ 1,857.45</u>	<u>\$ 3,100.00</u>
Awareness Program		
Shirts, Volunteers	\$ 415.30	\$ 500.00
Posters	\$ 0.00	\$ 500.00
Brochure	\$ 800.40	\$ 1,800.00
Subtotal	<u>\$ 1,215.70</u>	<u>\$ 2,800.00</u>
Speakers Bureau		
Symposium 2012	\$ 6,273.86	\$ 600.00
Printing	\$ 0.00	\$ 200.00
Subtotal	<u>\$ 6,273.86</u>	<u>\$ 800.00</u>
Office Expenses		
Awards	\$ 85.50	\$ 200.00
Travel	\$ 0.00	\$ 100.00
Misc. (Bank Fees, Website)	\$ 3.00	\$ 250.00
Subtotal	<u>\$ 88.50</u>	<u>\$ 550.00</u>
Contingency Funds		
Subtotal	<u>\$ 500.00</u>	<u>\$ 500.00</u>

**Total Expenses-to-date**                    **\$ 9,935.51**                    **\$ 7,550.00**

Effective Income, 2011                    \$ -1,335.51                    \$ -4,750.00  
Cash on hand Jan 1, 2012                    **\$ 13,092.25**                    **\$ 6,130.40**

Account Balances Oct 31, 2012  
BBVA Compass                    \$11,756.69  
PayPal                    \$ 0.05  
**Total cash on hand Oct 31, 2012**                    **\$11,756.74**                    **\$ 1,380.34**



**Bruce Stahl**  
**Treasurer, NTxPCC**  
**bstahl@prodigy.net**

10-31-2012  
Bruce Stahl  
Treasurer, NTxPCC

# Budget, 2013

(BoD approved)



NTxPCC, Budget 2013		
		<u>Income</u>
DONATIONS AND GRANTS		
	Symposium	\$4,000.00
	Bike Rally	\$1,000.00
	Other	\$500.00
	<u>Total Income</u>	<u>\$4,500.00</u>
		<u>Expenses</u>
HEALTH FAIRS AND SCREENING EVENTS		
	Support Material	\$500.00
	Handouts	\$1,000.00
	Brochures	\$2,000.00
	Sub-Total	<u>\$3,500.00</u>
AWARENESS PROGRAM		
	Shirts, Volunteers	\$500.00
	Posters	\$500.00
	Bike Rally	\$1,000.00
	Brochures	\$1,000.00
	Sub-Total	<u>\$3,000.00</u>
SPEAKERS BUREAU		
	Symposium 2013	\$7,000.00
	Symposium 2014	\$500.00
	Printing & Material	\$200.00
	Sub-Total	<u>\$7,700.00</u>
OFFICE EXPENSES		
	Awards	\$200.00
	Website	\$100.00
	Misc	\$250.00
	Sub-Total	<u>\$550.00</u>
CONTINGENCY FUNDS		
		<u>\$500.00</u>
	Sub-Total	<u>\$500.00</u>
	<u>Total Expenses</u>	<u>\$15,250.00</u>
CASH FLOW		
	<u>Cash in Hand, Dec. 31, 2012</u>	<u>\$13,000.00</u>
	Net Income (Loss), 2012	(\$10,750.00)
	<u>Cash in Hand, Dec. 31, 2013</u>	<u>\$2,250.00</u>





**NTxPCC**

## **Program Review, 2012**

## 2012 Progress

- Concentrated on Awareness Programs
  - Increased Health Fair Support
  - Added Speaker Engagements
- Prostate Cancer Symposium

# Activities/Progress - Programs



## ***Awareness Programs***

- *Speakers' Bureau*
- *Health Events Support*
- *Posters/Brochures*

## ***Survivor Programs***

- *Support Group Meetings*
- *Long Term Survivor (LTS) List*
- *Let's Talk on Tuesday ... (NDX and recurring)*
- *STEPS*
- *Combined Speakers (Symposium)*

## ***Website***

## ***Fundraising***

# Speakers' Bureau

## Early Detection Presentations

- Baylor/Plano Screening (2)

## Speaking Engagements

- Texas Masonic
- Hitachi, Semiconductor Div.
- Two events for “Honor Thy Father” were canceled by the organizer

# Health Events, Support (Summary)

- **24 events**

- *29 last year (decrease: screening events, other)*

- **New events**

- *NFL Health Fair, Arlington (UREF)*
- *Texas Masonic, Arlington, speaking engagement (FW)*
- *Texas Motors Car Show & Health Fair (FW)*
- *Texas Oncology Fort Worth, Screening (FW)*
- *FC Dallas; Awareness Table (UREF)*
- *"It's a Guy Thing", Baylor/Fort Worth; Health Fair (FW)*
- *2 Church Health Fairs, FW*
- *Ericsson Plano Health Expo (Plano)*
- *DFW Live Well*
- *Hitachi, Semiconductor Division, speaking engagement*

# Special Events, 2012

## **50 Hoops**

*July 21 (Sat); 50 Hoops Basket Ball Tournament*

## **Coalition**

*May 5 (Sat); Prostate Cancer Symposium*

## **Man to Man, Fort Worth / TH Harris, Fort Worth**

*Feb. 8 (Wed), Texas Masonic, Arlington; speaking engagement*

*Mar 24 (Sat); Texas Motors Car Show & Health Fair; Fort Worth*

*April 21 (Sat.); Texas Oncology Fort Worth; Screening*

*June 23 (Sat); "It's a Guy Thing", Baylor/Fort Worth; Health Fair*

*Aug. 11 (Sat.); Meadow Ridge Baptist Church, Fort Worth; Health Fair*

*Aug. 25 (Sat); Holy Tabernacle Church, Fort Worth; Health Fair*

*Sep. 15 (Sat); "Cruisin' for a Cure"; car show and screening; FW*

*Oct. 12 (Fri); DFW Live Well; Health Fair*

## **Us TOO, Baylor Dallas**

*June 23 (Sat); "It's a Guy Thing", Baylor/Dallas; Health Fair*

*Sep. 4 (Tue); Survivor Celebration, Baylor/Dallas*

# Special Events, 2012 (Continued)

## **Us TOO, Baylor Plano**

*April 28 (Sat); Medical Center of Plano; Health Fair*

*May 19 (Sat); Word of Life Ministries, Mesquite; Health Fair*

*June 23 (Sat); "It's a Guy Thing", Baylor/Plano; Health Fair*

*Sep. 8 (Sat); Screening, TH Presbyterian Plano*

*Oct. 11 (Wed); Ericsson Plano Health Expo*

*Nov. 16 (Fri); Hitachi, Semiconductor Div.; speaking engagement*

*Dec. 10 (Mon); Baylor/Plan; Survivor Holiday Program*

## **Us TOO, Presbyterian Dallas / UREF**

*Feb. 4 (Sat); NFL Health Fair, Arlington*

*May 6 (Sun); FC Dallas; Awareness Table*

*June 16 (Sat); DadFest, Richardson; Health Fair/Screening*

*Sept. 10 (Mon); UREF Golf Tournament*

*Oct. 4 (Thu); UREF Annual Dinner and Lecture*

<b>Total: <u>24 Events</u></b>
--------------------------------

**Note:** Man to Man, Fort Worth and Us TOO Baylor, Plano are currently the only two organizations participating in events outside their affiliated hospitals.

# Screening, 2012

- **Events (4)**
  - *Texas Oncology, FW*
  - *DadFest; TH Presbyterian/Dallas*
  - *TH Presbyterian, Plano*
  - *Cruisin' for a Cure – Carshow; TH Harris Methodist/Fort Worth; USMD*
- **Requirements**
  - *PSA & DRE*
  - *NCCN Guidelines/AUA Guidelines: Baseline screening at 40*
- **No screenings in 2012 by Baylor or Medical City**
  - *2011: 10 Screening Events (total)*



# Awareness – The Next Step?

- ***NBA Opportunity?***
  - *NBA interest*
  - *Presbyterian connected with Mavericks*
- ***NFL Awareness***
  - *Cancer Network/Colorado/NFL/Tony Romo*
  - *10 Houston Texan players wore blue in September (Blue Cure)*
- ***Zero has contract with NHL***
- ***MLS - FC Dallas***
  - *Presbyterian, Awareness Table at FCD game*
- ***MLB - Rangers?***

# Brochures



- ***Education Brochure (“Get Educated About ...”)***
  - *Intent to distribute to physicians*
  - *Updated*
- ***Awareness brochure (“What you should know ...”)***
  - *For Health Fairs, Screening events*
  - *Joint with Us TOO*
  - *Updated*
  - *Translated into Spanish (awaiting physician’s review)*

# Education Brochure

Early Detection is the Key  
to Successful Treatment.

**GET SCREENED!**



2011 Guidelines for Prostate Cancer released by the National Cancer Center Network recommend baseline testing at age 40. Guidelines by the American Urology Association (AUA) state that a baseline PSA level above the median for age 40 is a strong predictor of prostate cancer. In addition, AUA recommends that men who wish to be screened have a digital rectal exam as well as PSA testing.

Risk factors for Prostate Cancer are

AGE

FAMILY HISTORY

and

RACE

Are you well informed?  
Are you aware of your risks?  
Do you know your PSA?

Get Educated About  
Prostate Cancer!

## Support and Member Groups

### 50 Hoops, Dallas

Contact: Pat & Ed Sanders, 972-517-1254

### Man To Man, Fort Worth (at ACS Office)

Contact: Gayle Wilkins, 817-820-4868

### Man To Man, UT Southwestern Medical Center

Contact: Leticia Armstrong, 214-645-8765

### Tyler Prostate Cancer Awareness Program

Contact: Terrence Ales, 903-565-5926

### Us TOO, Baylor Medical Center, Dallas

Contact: Polly Candela, 214-820-3595

### Us TOO, Baylor Regional Medical Center, Plano

Contacts: Emily Gentry, 469-814-6753  
Tom Dillon, 972-998-5221

### Us TOO, Medical City Dallas Hospital

Contacts: Wanda Strange, 972-566-3086  
Bruce Stahl, 972-235-6819

### Us TOO, Texas Health Presbyterian, Dallas

Contact: Angie Clark, 214-345-5030

Check our supporters on our Website  
[www.ntxpcacoalition.org](http://www.ntxpcacoalition.org)

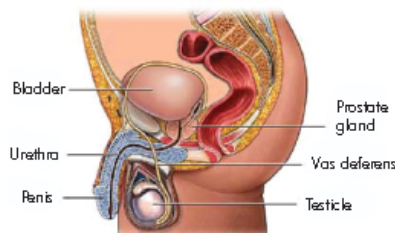
Get Educated About  
Prostate Cancer



APRIL 2012

# Awareness (Health Fair) Brochure

## What is Prostate Cancer?



The prostate is part of the male reproductive system, located below the bladder and just in front of the rectum. It is a walnut-size gland that manufactures fluid for semen.

Prostate cancer is a disease that affects the cells in the prostate. If cells divide in an abnormal way, they can form a tumor. Cancerous prostate tumors can block the flow of urine and, left untreated, can spread to other parts of the body.

Prostate cancer is the most common invasive cancer in men. Every year over 230,000 men are diagnosed with the disease in the United States, and about 30,000 will die. In Texas alone, over 13,500 men are diagnosed every year. If detected early, prostate cancer is often curable.

The majority of newly diagnosed prostate cancers are localized. (In other words, the tumor growth has not spread beyond the prostate gland). This is good news; early detection allows treatment options that increase chances of survival.

Prostate Cancer, in its early stages, may cause no symptoms. Once prostate cancer is detected, a number of treatment options may be recommended. Please consult your doctor, visit [www.ntxpcacoalition.org](http://www.ntxpcacoalition.org) or [www.ustoo.org](http://www.ustoo.org) to find out more about the risk and benefit of each option.

## Prostate Cancer Kills One Man Every 17 Minutes Don't Be One of Them

For the general population, a man in his lifetime has about a

- 16 percent chance (1 in 6) of being diagnosed with prostate cancer. The risk of being diagnosed increases to 20 percent for African-American men.
- 3 percent chance (1 in 33) of dying from prostate cancer.

The older you are, the greater the risk of getting prostate cancer. See the chart below:

AGE	ALL MEN	AFRICAN AMERICAN MEN
45	1 in 2,500	1 in 1,111
50	1 in 476	1 in 204
55	1 in 120	1 in 66
60	1 in 43	1 in 26
65	1 in 21	1 in 13
70	1 in 13	1 in 9
75	1 in 9	1 in 7
EVER	1 in 6	1 in 5

FOR MORE INFORMATION GO TO



[www.ntxpcacoalition.org](http://www.ntxpcacoalition.org)



[www.ustoo.org](http://www.ustoo.org)

© Copyright North Texas Prostate Cancer Coalition MARCH 2012

## What You Should Know About Prostate Cancer



# Support Group Meetings



- ***Six Support groups***
  - *Added Man to Man, UT-SW*
  - *Us TOO Mid-Cities folded*
- ***Two with regular “high” attendance***
- ***Need more physicians’ support (Brochure ...)***
- ***Lack of Speakers***

# Workshops



- ***NDX/Recurrence discussions available at “Let’s Talk on Tuesday”***
  - *Available to all survivors*
  - *We do NOT recommend hospitals/doctors*
- ***Need more support from physicians***
- ***LTS list was increasingly engaged***

“Let’s Talk on Tuesday” group received  
**Helping Hands** volunteer award from  
TH Harris Methodist Fort Worth





*Let's talk on Tuesday*  
about Prostate Cancer



*Sponsored by the Prostate Cancer Resource Center and  
The North Texas Prostate Cancer Coalition*

*Prostate Cancer Survivors* are waiting to talk with you ...

- Informal chat sessions with survivors
- Learn about treatment options and questions to ask your doctor.
- Provide reassurance and support you may need to face treatments.
- Learn about support groups and educational classes offered free!

**Tuesdays - from 10:00 am - 2:00 pm**

Cancer Resource Center - Klabzuba Tower Ground Floor  
1300 W. Terrell Avenue, Fort Worth, Texas 76104

For more information – contact Gayle Wilkins, MSN, RN, OCN  
Prostate Cancer Resource Center - 817-820-4868

TexasHealth.org

Doctors on the medical staff practice independently and  
are not employees or agents of the hospital.



# Survivor Chat

- *Some great sessions*
- *Off-Time used to prepare for other events on slow days*
- *Need more physicians' support*

# STEPS To Surviving Prostate Cancer



*Series cut from 6 to 3 weeks, coordinated by the Prostate Cancer Resource Center at Texas Health Harris, Fort Worth*

*No sessions in 2012*

*Offered for Fall 2012, no registrations*

*Need increased physicians' support*

*"Competition" from Let's Talk on Tuesday ..?*

**Discontinued ...**



# Combined Speakers Support

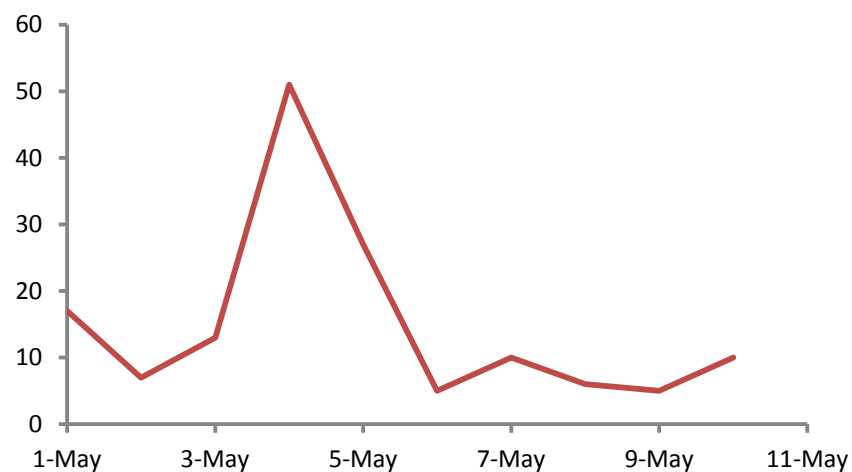
## *Symposium 2012*

- *Dr. Moyad; Dr. Nemunaitis; Dr. Sagalowsky; Livestrong; Survivor;*
- *Attendance ~80 (No-Shows!)*
- *Great response from Baylor, Texas Health (Presbyterian Dallas & Plano, Harris Foundation), Medical City, USMD, Texas Oncology, UREF*
- *Other sponsors included Abbott, Dendreon*

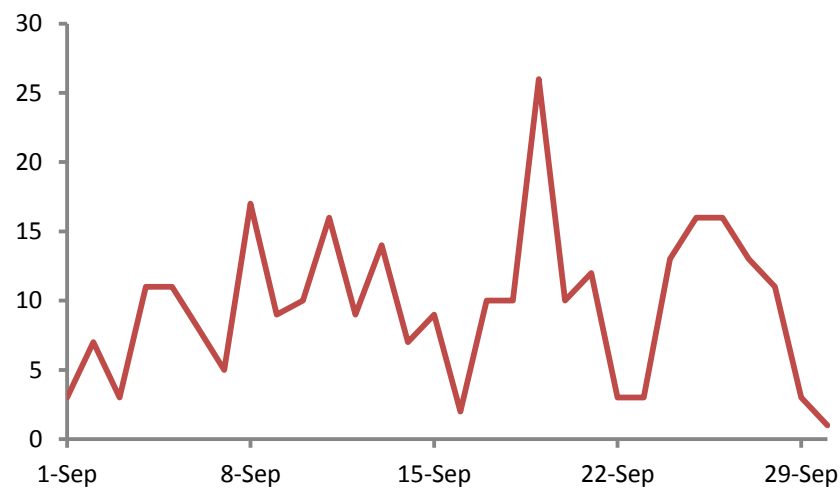
## *4-th Annual Survivor Celebration (Baylor/Dallas)*

- *Robert Hill, Survivor/Author*

# People are Aware of Website



**9 hits/day**



# Goals for 2013?

- **Diversity**

- African-American Community (South Dallas/50 Hoops)
- New Support Group in Oak Cliff (1<sup>st</sup> mtg. this month)
- Latino Community (start with Hispanic Community)

- **Speakers' Bureau**

- Presentations at Churches, Men's Clubs, Women's Clubs, etc.

- **Health Fairs/Screening Support**

- Baylor Grapevine, USMD
- Increase Health Fair tables (table cloths, handouts)
- We will support where and when possible and feasible

- **Awareness**

- Hawgs of Texas Motorbike Rally in Central Texas
- Urology/Texas Oncology Offices
- Challenge for our affiliated hospitals for September:  
“... **Hospitals and NTxPCC Go Blue?**”
- Media ?

# Combined Speakers

## 2013 Plan

- ***Baylor/Dallas: Annual Survivor Celebration event***
- ***Symposium***
  - *Intended for survivors and medical personnel (NOT applying for CME credit)*
  - *Should be a Coalition event involving all associated hospitals, similar to last year*
  - *Asking for nominal support*
  - *Same Location (Noah's)*
  - *April 20 (Saturday)*
- ***Please notify us in time if you are planning to bring in other speakers***
  - *We will support*

# Challenges



- ***Need program managers***
- ***Manpower shortage***
  - *Observed increase in volunteers is not sufficient*
  - *We are about saturated with projects for active volunteers*
- ***Financial***
  - *Symposium 2013 needs financial support*

# CPRIT meeting

(at Sammons, September 5)

(Cancer Prevention & Research Institute of Texas)

- ***Completing 3<sup>rd</sup> year of 10 year program***
- ***3 Program Areas***
  - *Research Programs (73%)*
  - *Prevention Programs (10%)*
  - *Commercialization Programs (17%)*
- ***Discussion focused on progress and future directives***
- ***CTNet - Network to provide the most cutting edge therapies to all Texans; includes coordination of Clinical Trials in TX, independent on clinical affiliation***
- ***Commented on lack of survivorship programs for PCa***

**Note:** October 10, 2012 – Resignation of half of program reviewers

<http://www.chron.com/news/houston-texas/article/Top-scientific-reviewers-defect-from-cancer-agency-3937384.php>

# NASPCC (Meeting Oct. 5-7, D.C.)

(National Alliance of State Prostate Cancer Coalitions)



- *Update on biomarkers and advanced treatments by Pharmaceutical Reps.*
- *Awareness Presentations/Discussion*
- *Minutes will be mailed to NTxPCC leadership*
- *NTxPCC is again represented on the NASPCC BoD*

**Note:** *No NTxPCC funds used for this event*

# Open Discussion

?



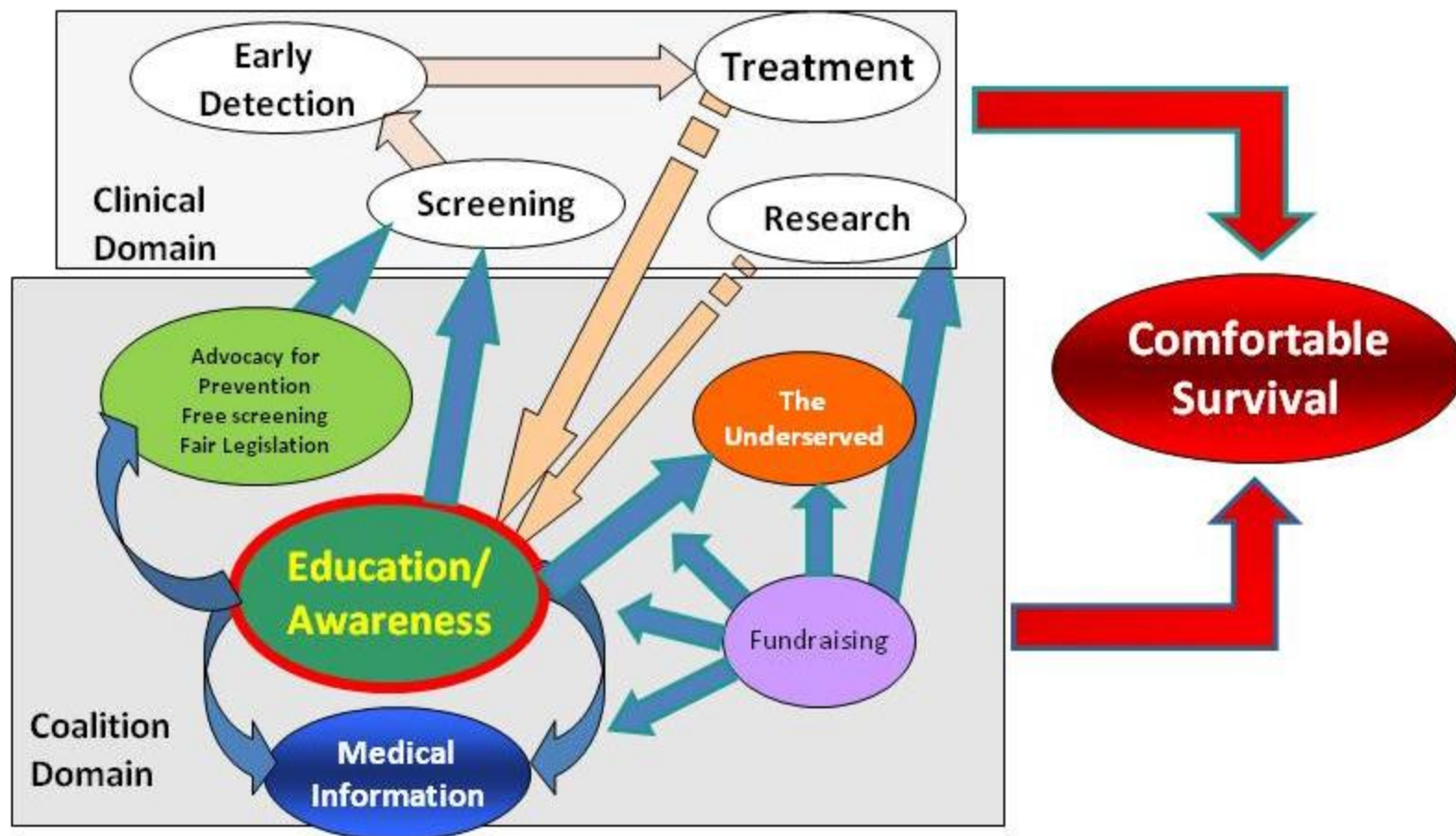
# Background

# NTxPCC History



- Started with a website for a local Support Group in Fort Worth, 2008
- Found another survivor interested in awareness programs
- Added Six Support Groups within the DFW Area
- Formed a Coalition, Spring 2009
- Elected Directors & Officers, Fall 2009
- Applied for Non-Profit Status for Texas – approved 2009
- Applied for 501 (c)(3) status with IRS – approved Feb. 2010
- Exempt from Franchise Taxes
- Expanded to include Tyler PCAP, June 2010
- Expanded to include 50 Hoops, Dallas, December 2011
- Tyler now Affiliate Member
- Expanded to include Man-to-Man UT-Southwestern, 2012

# NTxPCC - Coalition Intention



# Coalition Plans



## ***Area Interest Groups***

- *Some local prostate cancer groups not members of NTxPCC*

## ***Statewide Interest Groups***

- *Identified some of them*
- *Statewide plans TBD*

## ***NTxPCC***

- *NTxPCC will stay as North Texas Coalition*

# Other PC Organizations in Tx



- **D/FW Metroplex**
  - UREF
  - For Mankind (Golf tournament, PCa Awareness)
  - Dallas Moustache
- **Austin**
  - Prostate Cancer Research Center
  - Women against Prostate Cancer
- **Houston**
  - TXPCC
  - Blue Cure Foundation
- **Other Locations**
  - Wichita Falls, Amarillo, Lubbock, Sherman, Galveston
- **Us TOO, Man to Man organizations**

# Long Term Survivor List



***NTxPCC LTS volunteer members will talk about own experience only***

## ***LTS List***

*Surgery*

*Radiation*

*Other Treatment/Multiple Initial Treatment*

*Incontinence*

*Multiple Treatments (Recurrence)*

*Spousal Support*

## ***Patient Visits***

*Baylor/Dallas*

*USMD*

# Website

- ***Plenty of Information***
  - *Up-to-date*
- ***Try to stay away from controversial information***
  - *Five medical advisors*
- ***All events are posted***
  - *Chapter leaders are responsible for correctness of information regarding their respective chapter*
  - *Related events are posted as well*
- ***Page for sponsors/supporters***
- ***Love to have input / suggestions***
  - *Major or minor*

# North Texas Prostate Cancer Coalition



**TOGETHER FOR GOOD HEALTH**